

Standard Surface Mounted Rectifiers

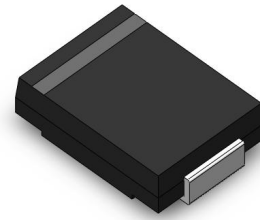
GS3AC~GS3MC
3.0A
50 to 1000V
DO-214AB(SMC)

Features

- ◆ The plastic package carries Underwriters Laboratory Flammability Classification 94V-0
- ◆ Idea for printed circuit board
- ◆ Glass passivated Junction chip
- ◆ Low reverse leakage
- ◆ High forward surge current capability
- ◆ High temperature soldering guaranteed 250°C/10 seconds at terminals

Mechanical Data

- ◆ Case : Molded plastic body
- ◆ Terminals : Solder plated, solderable per MIL-STD-750, Method 2026
- ◆ Polarity : Polarity symbol marking on body
- ◆ Mounting Position : Any
- ◆ Weight : 0.008 ounce, 0.225grams


DO-214AB(SMC)

Maximum Ratings and Electrical Characteristics (T_A = 25°C unless otherwise noted)

Ratings at 25°C ambient temperature unless otherwise specified. Single phase half wave 60Hz, resistive or inductive load.
For capacitive load, derate current by 20%.

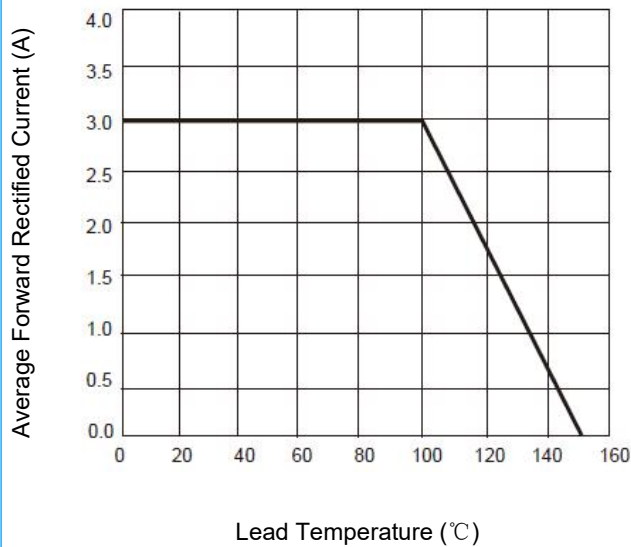
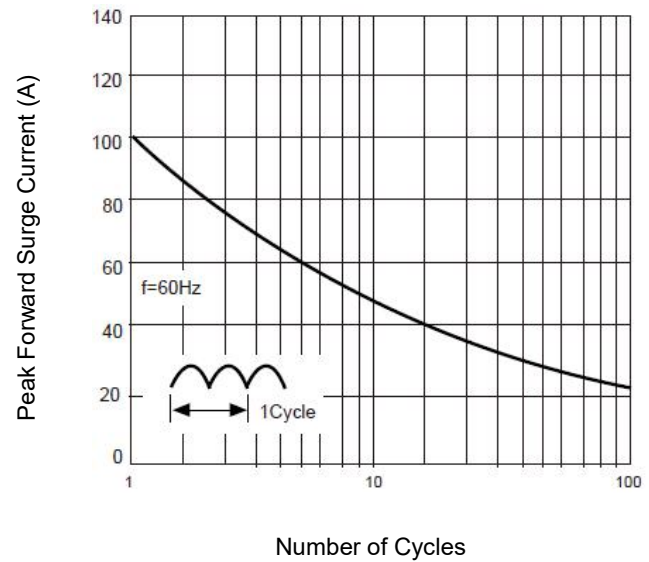
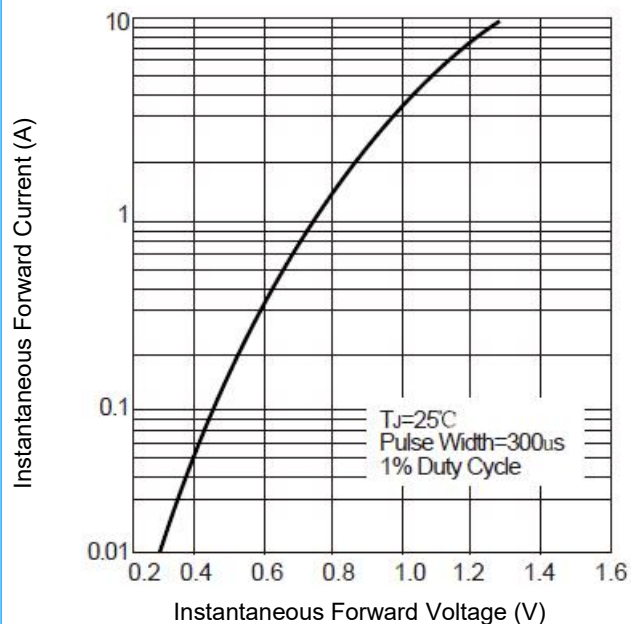
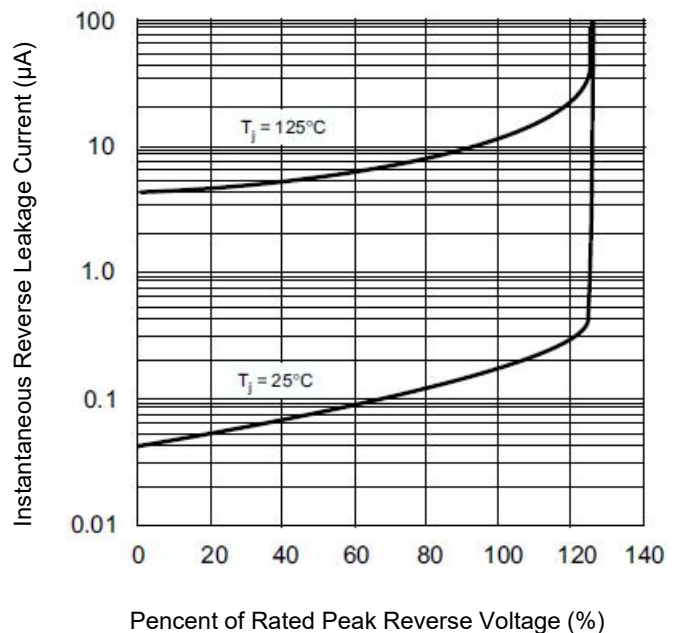
Items	Symbol	GS3AC	GS3BC	GS3DC	GS3GC	GS3JC	GS3KC	GS3MC	Unit
Maximum repetitive peak reverse voltage	V _{RRM}	50	100	200	400	600	800	1000	V
Maximum RMS voltage	V _{RMS}	35	70	140	280	420	560	700	V
Maximum DC blocking voltage	V _{DC}	50	100	200	400	600	800	1000	V
Maximum average forward rectified current at T _L =100°C	I <sub(av)< sub=""></sub(av)<>	3.0							A
Peak forward surge current, 8.3ms single half sine-wave superimposed on rated load	I _{FSM}	100							A
Maximum instantaneous forward voltage at 3.0A	V _F	1.1							V
Maximum DC reverse current at rated DC blocking voltage	T _A =25°C	5							μA
	T _A =125°C								
Typical junction capacitance (Note 1)	C _J	40							pF
Typical thermal resistance	R _{qJA}	47							°C/W
Operating junction and storage temperature range	T _J , T _{STG}	-55 to +150							°C

Note: 1. Measured at 1MHz and applied reverse voltage of 4.0V D.C.

Standard Surface Mounted Rectifiers

GS3AC~GS3MC
3.0A
50 to 1000V
DO-214AB(SMC)

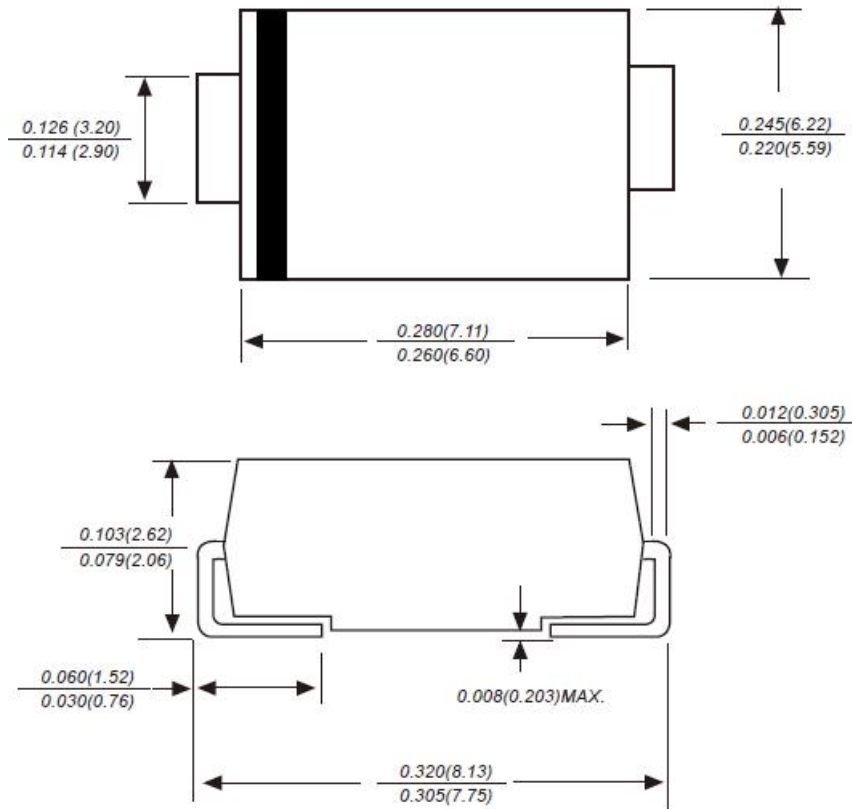
Ratings And Characteristic Curves

Fig1. Derating Curve Output Rectified Current

Fig2. Maximum Non-Repetitive Peak Forward Surge Current Perleg

Fig3. Typical Forward Voltage Characteristics

Fig4. Typical Reverse Leakage Characteristics


Standard Surface Mounted Rectifiers

GS3AC~GS3MC
3.0A
50 to 1000V
DO-214AB(SMC)

DO-214AB(SMC) Package Outline (Unit: mm)



Packaging Information

Part Number	Component Package	Quantity
GS3AC~GS3MC	DO-214AB(SMC)	3000 PCS/REEL

Warning



- ◆ SOCAY owns the rights to a number of patents, trademarks, copyrights, trade secrets, and other intellectual property.
- ◆ SOCAY reserves the right to make changes without further notice to any products herein.
- ◆ SOCAY makes no warranties, representations or warranties as to the fitness of its products for any particular purpose, and disclaims any liability.
- ◆ The parameters provided in the SOCAY datasheet specification may vary from application to application, and the actual performance may vary over time. All operating parameters must be verified by the customer's technical expert before application.
- ◆ Any and all responsibilities and liabilities are disclaimed if any item under this notice of warning is not complied with.