

General Standard Diodes

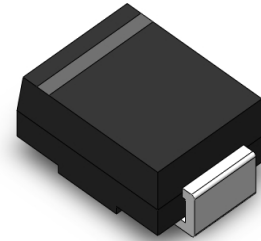
GS5AB~GS5MB
5.0A
50 to 1000V
DO-214AA(SMB)

Features

- ◆ The plastic package carries Underwriters Laboratory Flammability Classification 94V-0
- ◆ Glass passivated Junction chip
- ◆ Low reverse leakage
- ◆ High forward surge current capability
- ◆ High temperature soldering guaranteed 250°C/10 seconds at terminals

Mechanical Data

- ◆ Case : Molded plastic body
- ◆ Terminals : Solder plated, solderable per MIL-STD-750, Method 2026
- ◆ Polarity : Polarity symbol marking on body
- ◆ Mounting Position : Any
- ◆ Weight : 0.0035 ounce, 0.098 grams


DO-214AA(SMB)

Maximum Ratings and Electrical Characteristics (T_A = 25°C unless otherwise noted)

Ratings at 25°C ambient temperature unless otherwise specified. Single phase half wave 60Hz, resistive or inductive load.
For capacitive load current derate by 20%.

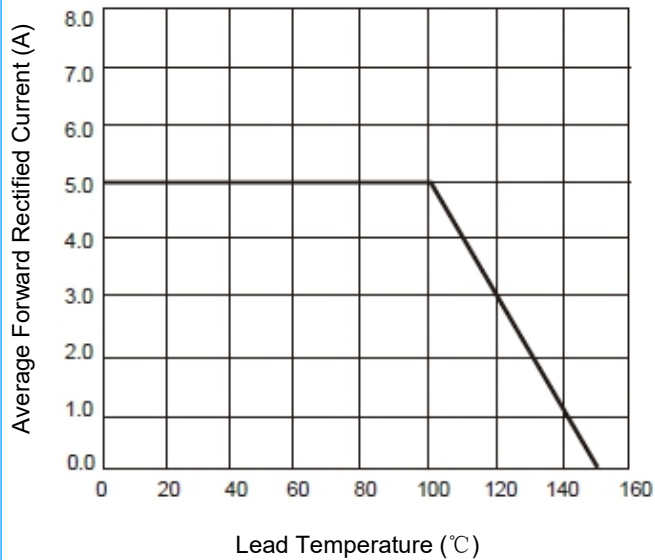
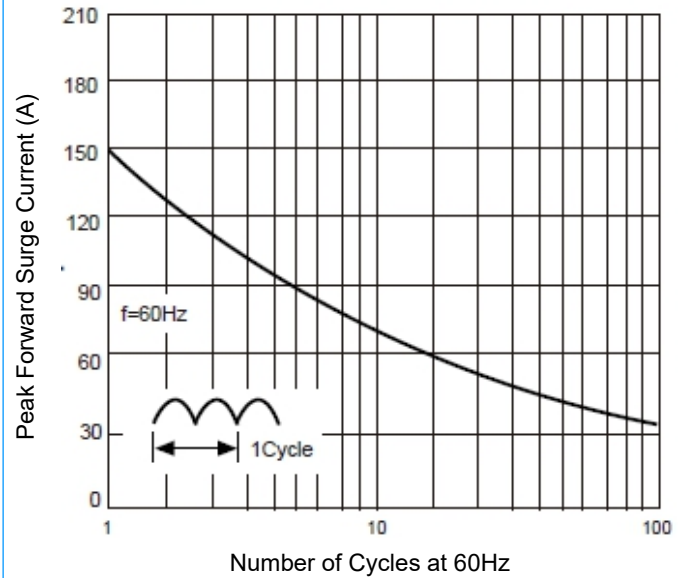
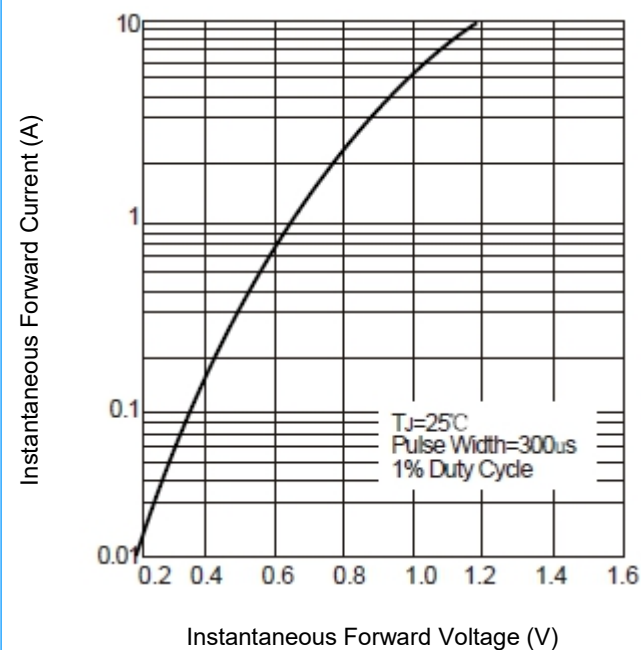
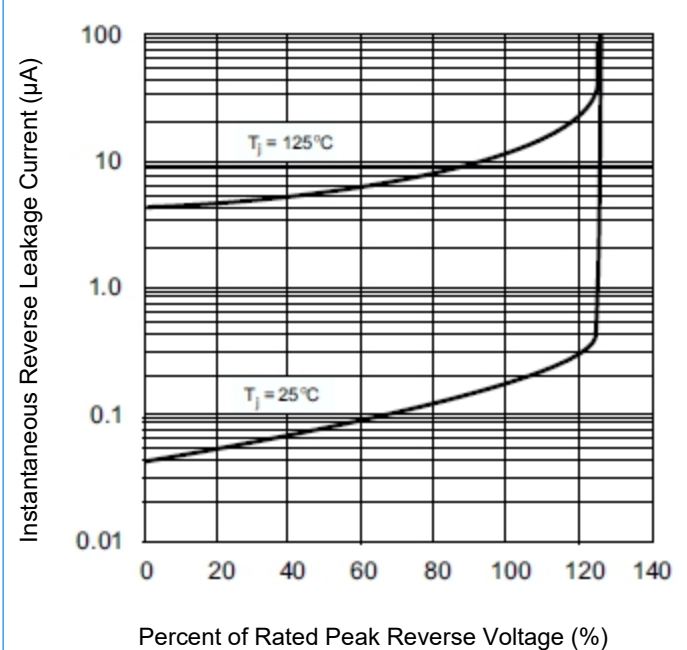
Parameter		Symbol	GS5AB	GS5BB	GS5DB	GS5GB	GS5JB	GS5KB	GS5MB	Unit
Maximum repetitive peak reverse voltage		V _{RRM}	50	100	200	400	600	800	1000	V
Maximum RMS voltage		V _{RMS}	35	70	140	280	420	560	700	V
Maximum DC blocking voltage		V _{DC}	50	100	200	400	600	800	1000	V
Maximum average forward rectified current		I _(AV)	5.0							A
Peak forward surge current, 8.3ms single half sine-wave superimposed on rated load		I _{FSM}	150							A
Maximum instantaneous forward voltage at 5.0A		V _F	1.1							V
Maximum DC reverse current at rated DC blocking voltage	T _A =25℃	I _R	5 500							μA
	T _A =125℃									
Typical junction capacitance (Note 1)		C _J	50							pF
Typical thermal resistance		R _{qJA}	85							℃/W
Operating junction and storage temperature range		T _J ,T _{STG}	-55 to +150							℃

Notes: 1. Measured at 1.0 MHz and applied reverse voltage of 4.0V D.C.

General Standard Diodes

GS5AB~GS5MB
5.0A
50 to 1000V
DO-214AA(SMB)

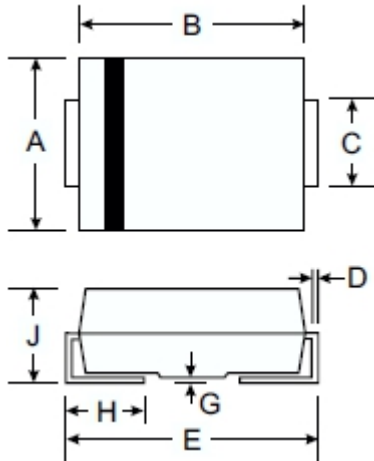
Typical Characteristic Curves

Fig. 1. Derating Curve Output Rectified Current

Fig. 2. Maximum Non-Repetitive Peak Forward Surge Current Per Leg

Fig. 3. Typical Forward Voltage Characteristics

Fig. 4. Typical Reverse Leakage Characteristics


General Standard Diodes

GS5AB~GS5MB
5.0A
50 to 1000V
DO-214AA(SMB)

DO-214AA(SMB) Package Outline (Unit: mm)



Dim	Min	Max
A	3.30	3.94
B	4.06	4.57
C	1.85	2.20
D	0.152	0.305
E	5.00	5.59
G	0.000	0.203
H	0.76	1.52
J	2.10	2.50

Packaging Information

Part Number	Component Package	Quantity
GS5AB~GS5MB	DO-214AA(SMB)	3000 PCS/REEL

Warning



- ◆ SOCAY owns the rights to a number of patents, trademarks, copyrights, trade secrets, and other intellectual property.
- ◆ SOCAY reserves the right to make changes without further notice to any products herein.
- ◆ SOCAY makes no warranties, representations or warranties as to the fitness of its products for any particular purpose, and disclaims any liability.
- ◆ The parameters provided in the SOCAY datasheet specification may vary from application to application, and the actual performance may vary over time. All operating parameters must be verified by the customer's technical expert before application.
- ◆ Any and all responsibilities and liabilities are disclaimed if any item under this notice of warning is not complied with.